

Burger Classics



	JODY	JR.	TRIPLE
CHEESE BURGER	3.54	2.54	4.54
HAMBURGER	3.19	2.19	4.19
BACON BURGER	3.74	2.74	4.74
ONION MELT	3.89	2.89	4.89
MUSHROOM MELT	4.09	3.09	5.09
MUSHROOM BURGER	3.74	2.54	4.74
CHILI BURGER	3.49	2.49	4.59
OLIVE BURGER	3.49	2.49	4.49
TURKEY BURGER	3.59		

Dinners



DINNERS -- Salad, potato & choice of roll
LUNCHES -- Smaller meat portion
BASKETS -- Lunch portion with potato

	LUN	DIN	BASKET
CHICKEN			
FAMOUS FRIED CHICKEN (All white .25/pc., All dark .15/pc.)	6.29	7.39	4.95
CRISPY CHICKEN STRIPS	6.79	7.79	5.55
CHICKEN TENDERS	6.79	7.79	5.55
GRILLED CHICKEN	6.39	7.79	
TERIYAKI CHICKEN	6.69	8.09	
CERTIFIED ANGUS BEEF			
8 oz. SIZZLER STEAK		8.89	
SIRLOIN TIPS	7.39	8.89	
SEAFOOD			
FISH (Batter Dipped Cod)	6.39	7.79	4.95
SHRIMP	7.19	8.19	5.75
HAM STEAK	5.99	6.99	

Wrap Sandwiches

CHICKEN CAESAR WRAP	4.69
HARVEST WRAP	5.19
TURKEY / BACON / RANCH WRAP	4.69
ASIAN WRAP	4.69

MAKE IT A COMBO add any
drink & side save .40



GREAT FOOD SERVED FAST!

Certified Angus beef sands



STEAK SANDWICH (On French roll)	4.49
FRENCH DIP	3.89
FRENCH DOUBLE DIP	5.59
ROAST BEEF SANDWICH (Aujus + .35)	3.39

Jody's Favorites

WET BURRITO	7.29
ALL-MEAT WET BURRITO	7.79
CHICKEN BURRITO	7.79
STEAK BURRITO	7.79
SPAGHETTI w/ Meatballs	6.59
SPAGHETTI	5.59
STEAK OR CHICKEN QUESADILLA	5.69
CHEESE QUESADILLA	4.39
(Add ham, pepperoni or mushrooms .50 ea)	
MAC & CHEESE	5.99
CHIPS & CHEESE add meat + .40	3.09
Add tomato or lettuce +.20 (ea.)	

Pizza

7" CHEESE PIZZA	2.69
7" PEPPERONI	2.99

Burger and Sandwich toppings

AMER., SWISS, OR PROVO CHEESE	35¢
TOMATO, OLIVES OR GRLD ONIONS (ea.)	30¢
BACON OR SAUTEED MUSHROOMS	55¢
<i>Relish, bbq, honey mustard, or chipotle ranchero on request</i>	

Side Orders



	Small	Large
FRENCH FRIES	1.59	1.89
w/ chili, cheese, bacon (.40 each)		
ONION RING		2.95
MOZZARELLA STICKS		3.49
MAC & CHEESE		3.49
CHIPS & CHEESE		3.29
add meat + .40		
add tomato or lettuce +.20 (ea.)		
CHILI	2.79	3.59
SOUP	2.59	3.29
COLESLAW OR CINNAMON APPLES		1.09
BROCCOLI		1.69
CINNAMON OR CARAMEL ROLL		1.19
(4 or more to go/ 20% off order)		
CHICKEN BUCKET (per pc-mixed)		1.19
(quantity discount available)		



GREAT FOOD SERVED FAST!

Salads



ENTRÉE SALADS (Regular size)
SIDE SALADS (perfect with a sandwich!)

	ENTREE	SIDE
CHEF	6.19	3.49
PECAN STEAK	6.19	3.49
TACO	6.19	3.49
CHICKEN TACO	6.19	3.49
The following salads are priced without chicken		
ADD CHICKEN FOR:	1.20	.60
HARVEST	5.09	2.99
CAESAR	4.59	2.59
GARDEN	4.59	2.59
HAWAIIAN	4.99	2.89
GREEK	4.89	2.89
ASIAN	4.99	2.89

Beverages

	S	M	L
COKE, SPRITE, DIET COKE, CAF FREE	1.29	1.39	1.65
DIET, CHERRY COKE, ROOT BEER, SPRITE, ICED TEA, RASP ICED TEA	1.59	1.69	1.95
LEMONADE, RASP LEMONADE	1.59	1.79	
FROZEN COKE/CHERRY	1.89	2.39	
SHAKES			
CHOC. VAN. STRAW. ORANGE			
COFFEE, TEA			1.25
HOT CHOCOLATE			1.37
MILK / CHOC. MILK	1.09		1.49
APPLE JUICE			1.89

Deli Sandwiches



GRILLED CHICKEN CLUB	4.44
GRILLED CHICKEN	3.59
ROASTED TURKEY CLUB	4.24
ROASTED TURKEY	3.39
BAKED HAM	3.39
FISH SANDWICH (butter dipped cod tail)	3.99
CHICKEN SALAD	3.49
BLT	3.19
GRILLED CHEESE	2.49
CHILLI DOG	2.69
HOT DOG	2.39
CHICKEN TENDERS	3.59

Stuffed baked potatoes



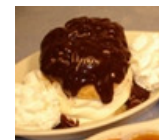
POTATO w/ MARGARINE	1.75
CHEDDAR CHEESE	.75
BACON OR BROCCOLI (ea.)	.45

Food safety reminder: Our hamburgers are cooked to well done unless otherwise requested. Consuming raw or undercooked meat, eggs or steak (cooked rare or to order) may increase your risk of food borne illness.

Jody's will give \$1 off any single drive-thru order over \$12

Prices effective April 1, 2011 – Subject to change

Desserts



STRAWBERRY SHORTCAKE	3.75
RASPBERRY SHORTCAKE	3.75
CHEESECAKE	3.29
w/ straw, rasp, or candy (+.50 each)	
BROWNIE DELUXE	3.39
TURTLE or COOKIE DELUXE	3.69
FRUIT PIE	2.19
COOKIE SANDWICH	1.55
JUST BAKED CHOC CHIP COOKIE	1.49
BROWNIE	99¢
SUNDAES	
strawberry, rasp, or turtle parfait	2.59
candy parfait (M&M's, Reese's, or Heath)	2.59
hotfudge or caramel parfait	2.29

Children's meals (ages 12 and under)

BURGER, CHICKEN, MAC & CHEESE	3.79
HOT DOG, GRILLED CHEESE	3.79
CHICKEN STRIPS	4.45
CHICKEN TENDERS	4.45